

The Arcs on the Beach Line

Dan Halperin, Tel Aviv University

Overview

- The complexity of the lower envelope
- Arc appearance
- Arc disappearance

Figures taken from Chapter 9 in Computational Geometry Algorithms and Applications, Delaunay Triangulations, by de Berg et al

Complexity of the beach line

How many arcs can appear on the beach line

- this in turn will determine the storage requirement of the status structure
- [arc: a maximal contiguous portion of a parabola on the lower envelope]
- n sites: at most $2n - 1$ arcs
- more generally, the lower envelope of n parabolas can have at most $2n - 1$ maximal arcs
- Demo: <http://www.raymondhill.net/voronoi/rhill-voronoi.html>

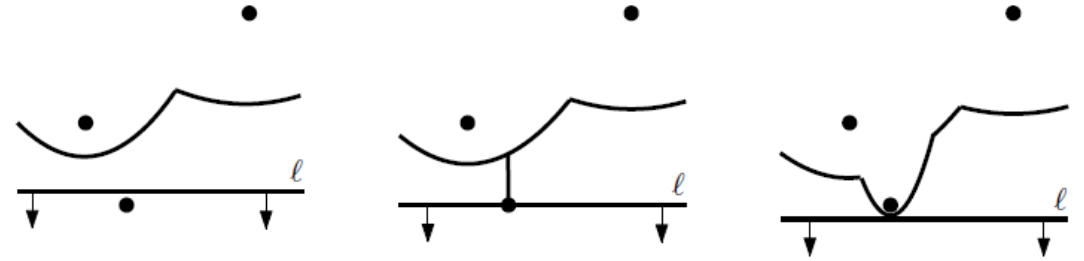
Arc appearance and
disappearance

Reminder

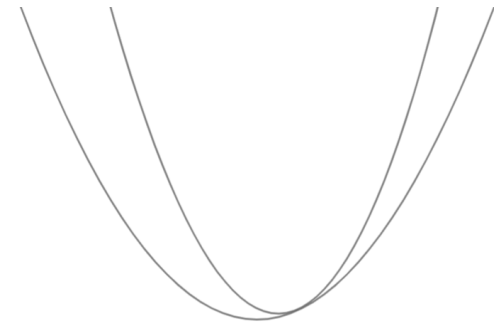
- the only way for a new parabolic arc to appear on the beach line is through a site event
- the only way for a parabolic arc to disappear from the beach line is through a circle event

Arc appearance

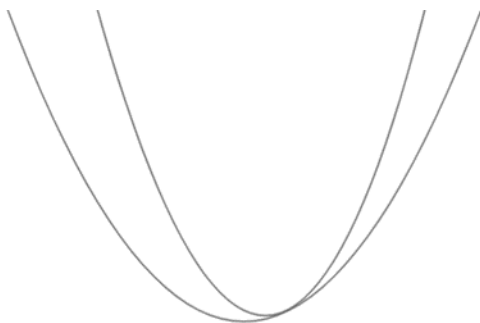
- obviously possible at a site event



- a parabola cannot penetrate the beach line from above, I: if only one common point, the parabolas must be the same (simple algebra)



- a parabola cannot penetrate the beach line from above, I



The Appearance of a New Parabola on the Beach-Line

In Fortune's algorithm a parabola newly appears on the beach-line only in a site event, and only disappears from the beach-line in a circle event. Here we show that a parabola cannot penetrate the beach-line from above.

Claim 1. *In Fortune's sweep-line algorithm for constructing Voronoi diagrams, a parabola cannot penetrate the beach-line from above.*

Proof.

Let $s_1 = (x_1, y_1)$ and $s_2 = (x_2, y_2)$ be two distinct sites in the plane. Let $L(y)$ be the horizontal sweep line at height y .

Assume without loss of generality that the sweep-line reached $y = 0$. For a parabola to be active, its inducing site needs to be above the sweep-line. The parabola π_i bounds from below all the points that are closer to s_i than to any site s_j lying below the current placement of the sweep-line $L(0)$. In particular it is the loci of points with equal distance to s_i and $L(0)$:

$$(x - x_i)^2 + (y - y_i)^2 = y^2.$$

As y_i is assumed to lie above $L(0)$ we can rewrite the equation of the parabola π_i as follows:

$$\begin{aligned} x^2 - 2x_i x + x_i^2 + y^2 - 2y_i y + y_i^2 &= y^2, \\ 2y_i y &= x^2 - 2x_i x + x_i^2 + y_i^2, \\ y &= \frac{1}{2y_i}(x^2 - 2x_i x + x_i^2 + y_i^2). \end{aligned}$$

In summary the parabola π_i defined by s_i when the sweep line is at $y = 0$ is $\frac{1}{2y_i}(x^2 - 2x_i x + x_i^2 + y_i^2)$. Let $\pi_{12} = \pi_1 - \pi_2$. That is, π_{12} equals

$$x^2 \left(\frac{1}{2y_1} - \frac{1}{2y_2} \right) + x \left(\frac{x_2}{y_2} - \frac{x_1}{y_1} \right) + \left(\frac{x_1^2 + y_1^2}{2y_1} - \frac{x_2^2 + y_2^2}{2y_2} \right).$$

The roots of the parabola π_{12} are the x coordinates of the intersection points between π_1 and π_2 . Consider the equation $\pi_{12} = 0$, rewritten as $Ax^2 + Bx + C$ with

$$\begin{aligned} A &= \frac{1}{2y_1} - \frac{1}{2y_2}, \\ B &= \frac{x_2}{y_2} - \frac{x_1}{y_1}, \\ C &= \frac{x_1^2 + y_1^2}{2y_1} - \frac{x_2^2 + y_2^2}{2y_2}. \end{aligned}$$

The discriminant of the equation $\pi_{12} = 0$ is

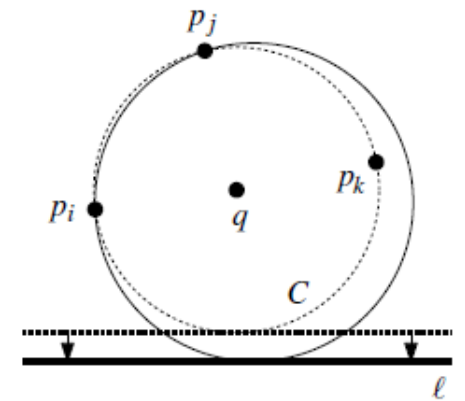
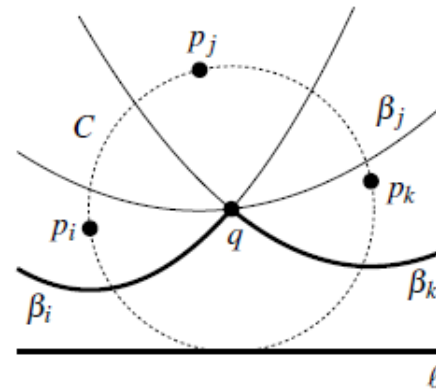
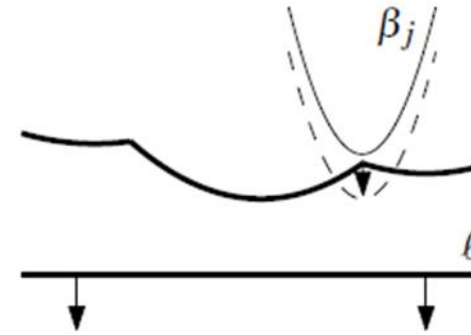
$$\begin{aligned} B^2 - 4AC &= \left(\frac{x_2}{y_2} - \frac{x_1}{y_1} \right)^2 - 4 \left(\frac{1}{2y_1} - \frac{1}{2y_2} \right) \left(\frac{x_1^2 + y_1^2}{2y_1} - \frac{x_2^2 + y_2^2}{2y_2} \right) \\ &= \left(\frac{x_2}{y_2} - \frac{x_1}{y_1} \right)^2 - \left(\frac{1}{y_1} - \frac{1}{y_2} \right) \left(\frac{x_1^2 + y_1^2}{y_1} - \frac{x_2^2 + y_2^2}{y_2} \right) \\ &= \frac{x_2^2}{y_2^2} - 2 \frac{x_1 x_2}{y_1 y_2} + \frac{x_1^2}{y_1^2} - \left(\frac{x_1^2 + y_1^2}{y_1^2} - \frac{x_2^2 + y_2^2}{y_1 y_2} - \frac{x_1^2 + y_1^2}{y_1 y_2} + \frac{x_2^2 + y_2^2}{y_2^2} \right) \\ &= \frac{x_2^2}{y_2^2} - 2 \frac{x_1 x_2}{y_1 y_2} + \frac{x_1^2}{y_1^2} - \frac{x_1^2}{y_1^2} - 1 + \frac{x_1^2 + y_1^2 + x_2^2 + y_2^2}{y_1 y_2} - \frac{x_2^2}{y_2^2} - 1 \\ &= \frac{1}{y_1 y_2} (x_1^2 + y_1^2 + x_2^2 + y_2^2 - 2x_1 x_2 - 2y_1 y_2) \\ &= \frac{1}{y_1 y_2} [(x_1^2 - 2x_1 x_2 + x_2^2) + (y_1^2 - 2y_1 y_2 + y_2^2)] \\ &= \frac{1}{y_1 y_2} [(x_1 - x_2)^2 + (y_1 - y_2)^2] \end{aligned}$$

Notice that $y_1 y_2 > 0$ by assumption. Therefore the final expression above is non-negative. It equals zero only if $x_1 = x_2$ and $y_1 = y_2$, in which case the parabolas are identical. It follows that for two distinct sites, both of which lying above the sweep line, the corresponding parabolas, no matter where the sweep line is (we can always translate the plane such that the sweep line is at $y = 0$), have two intersection points.

□

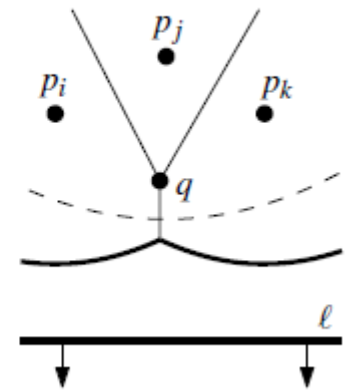
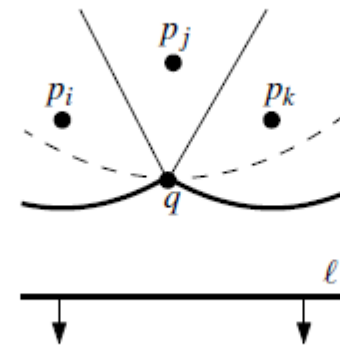
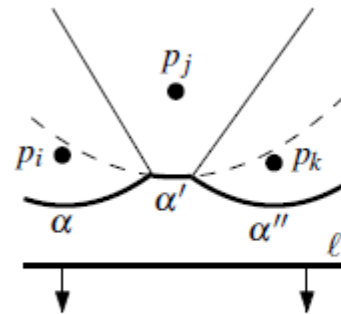
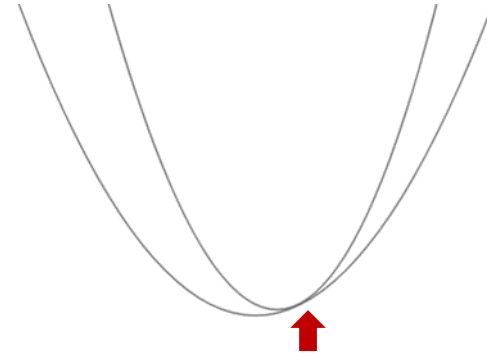
Arc appearance, cont'd

- a parabola cannot penetrate the beach line from above, II, through a breakpoint



Arc disappearance

- a parabola cannot disappear into another parabola—the same argument as before (considering the opposite direction)
- a parabola can only disappear between two other parabolic arcs



THE END